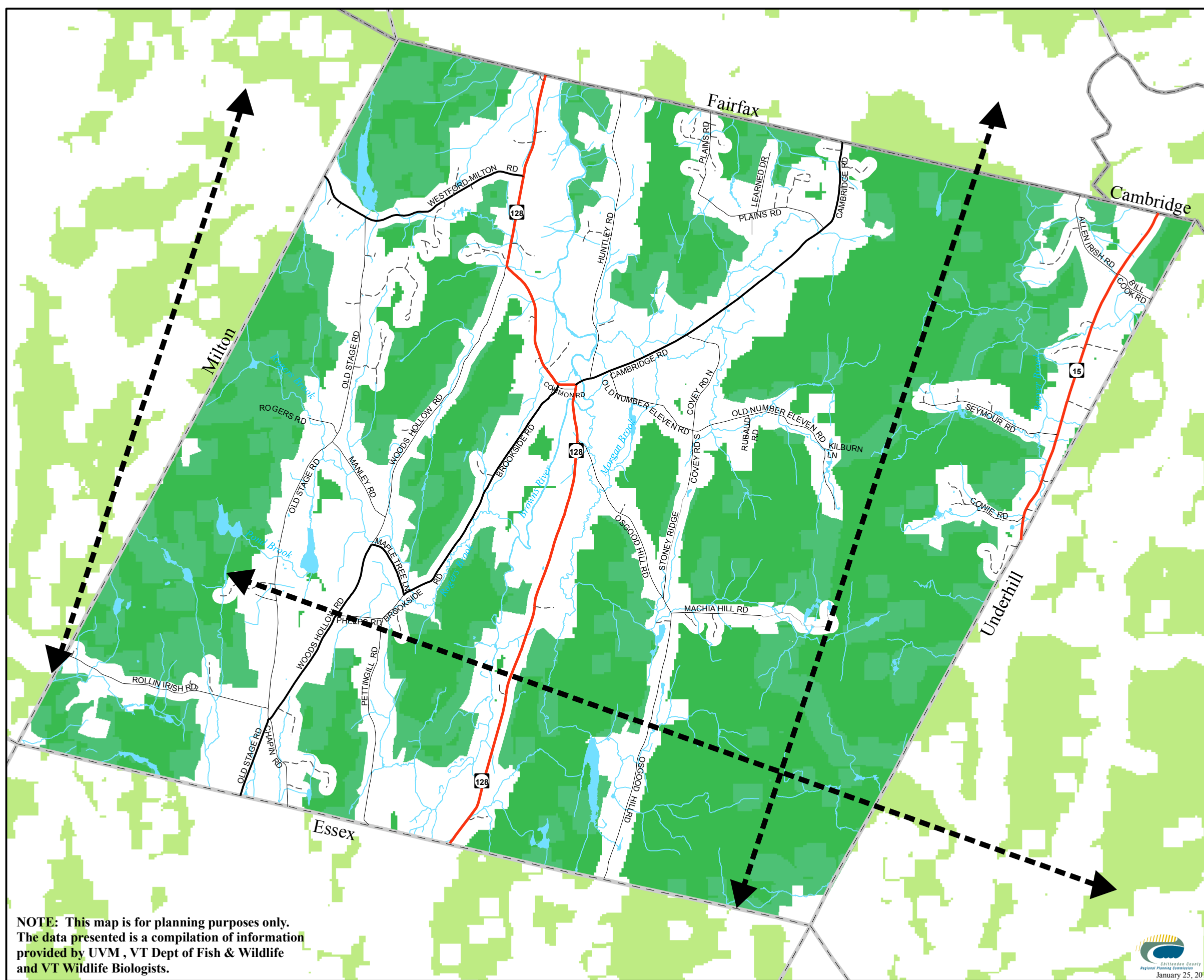


# Map 10 Unfragmented Forest & Wildlife Movement Westford Vermont

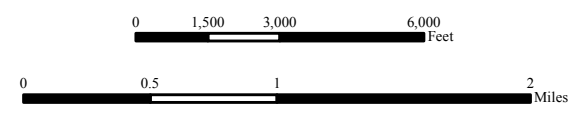


- Legend**
- Wildlife Movement
  - Unfragmented Forest
  - Core Habitats in Vermont**
  - from the VT Biodiversity project
  - Road Centerline**
  - VT State Highway - 9.37 miles
  - Class 2 - 9.76 miles
  - Class 3 - 29.56 miles
  - Class 4 - 1.48 miles
  - Private - 8.37 miles
  - Town Boundary
  - County Boundary
  - Stream Centerline
  - Water Body



1:48,000

1 inch = 4,000 feet



Sources:  
roads - e911 road data, last updated September 2008  
Parcels - 2008 - Updated by IVS  
surface water - VT Hydrography set - 2003

Disclaimer:  
The accuracy of information presented is determined by its sources. Errors and omissions may exist. The Chittenden County Regional Planning Commission is not responsible for these. Questions of on-the-ground location can be resolved by site inspections and/or surveys by registered surveyor. This map is not sufficient for delineation of features on-the-ground. This map identifies the presence of features, and may indicate relationships between features, but is not a replacement for surveyed information or engineering studies.



January 25, 2010

**NOTE: This map is for planning purposes only. The data presented is a compilation of information provided by UVM, VT Dept of Fish & Wildlife and VT Wildlife Biologists.**